



Un coniglio, solo talks about Hikikomori phenomenon, the solitude of the contemporary man.

Designing the stage for *Un coniglio, solo* meant working with a space-non-space marked by objects to define it. The stage has been transformed into the bedroom of the hikikomori, a place which is breaking into pieces.

CREDITS

Director: **Tommaso Franchin**

An original play by **Andrea Dellai**

Set design and costume design: **Fabio Carpena**

Light design: **Manuel Garzetta**

Video design: **Andrea Santini**

Andrea Dellai as the Rabbit

Ermelinda Nasuto as the fairy godmother

UN CONIGLIO, SOLO

Yoshinogari Iseki
japanese house
3rd century BC / 3rd century AD



An autumn afternoon
Yasujiro Ozu
1962



Nakagin Capsule Tower
japanese capsule
1970



Hikikomori - Chujo
Maika Elan
2017



Capsule Hotel





Utagawa Hiroshige
Snow Scene at the Shrine of Benzaiten in the Pond at Inokashira
1844-45



Utagawa Hiroshige
Plum Park in Kameido
1857



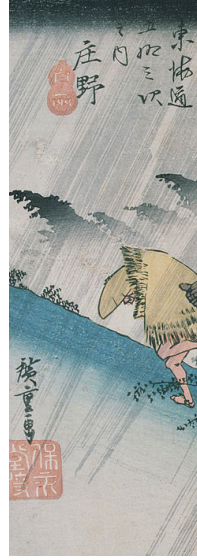
Utagawa Hiroshige
Night view of Saruwaka-machi
1856



Katsushika Hokusai
Fuji above the Lightning
1826-1833



Utagawa Hiroshige
Evening shower at Tadasu riverbank
1797-1858



Utagawa Hiroshige
Light rain at Shono
1797-1858



Utagawa Hiroshige
Bikuni Bridge in Snow
1857



Katsushika Hokusai
Boy Viewing Mount Fuji
1839

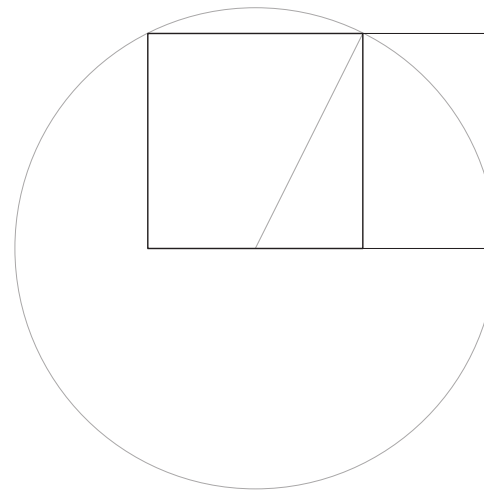


Katsushika Hokusai
Dragon flying over Mount Fuji
1826-1833

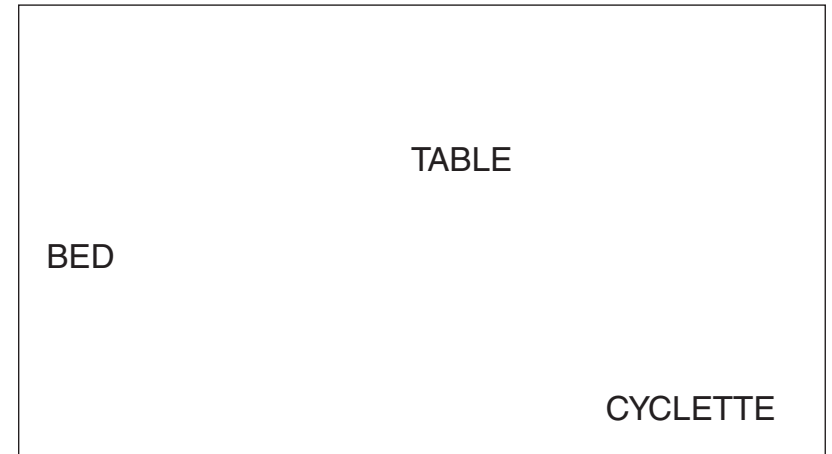


Utagawa Hiroshige
Oiso: Tora's rain
1833

Japanese spaces are characterized by regular shapes, they convey a sense of order and rigor. To communicate this sense, to design the set was used the golden section, an element that is also found in nature, a symbol of precision and perfection.



THREE ELEMENTS



Ryoan-ji, Kyoto, Japan

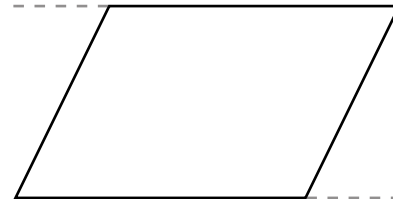
DESIGN PROCESS



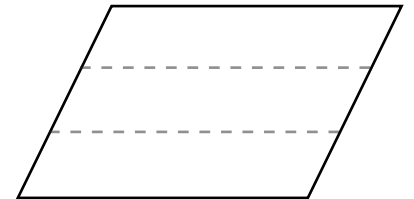
**classical
stage**



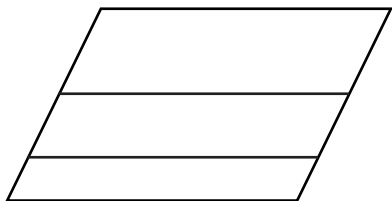
rhythm



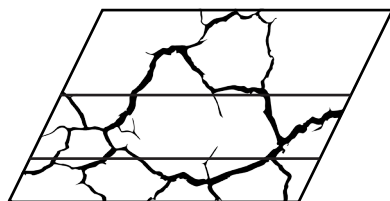
time



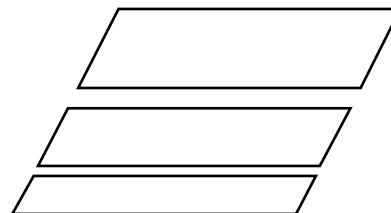
interludes



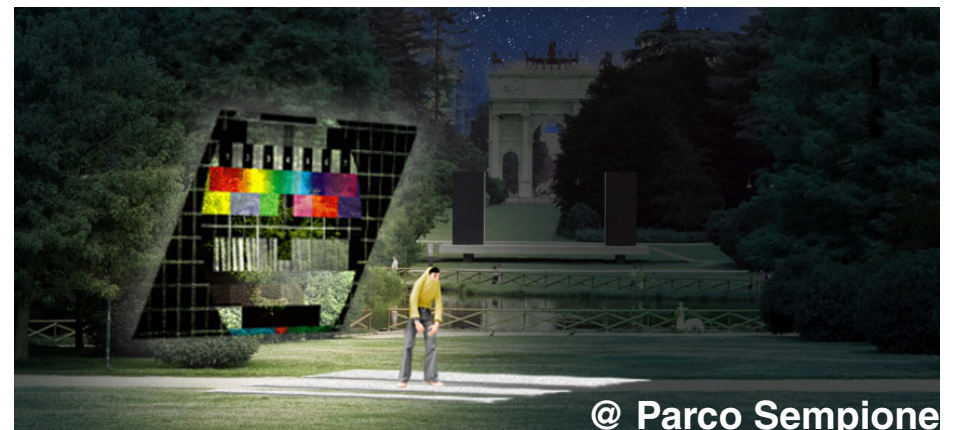
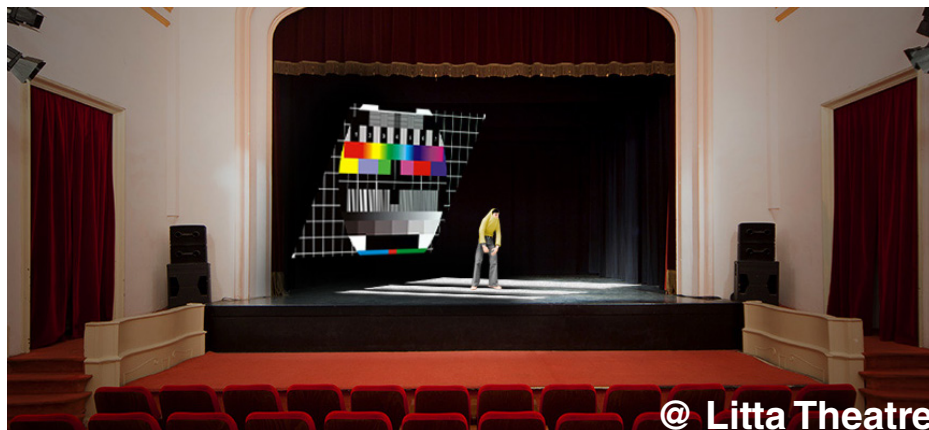
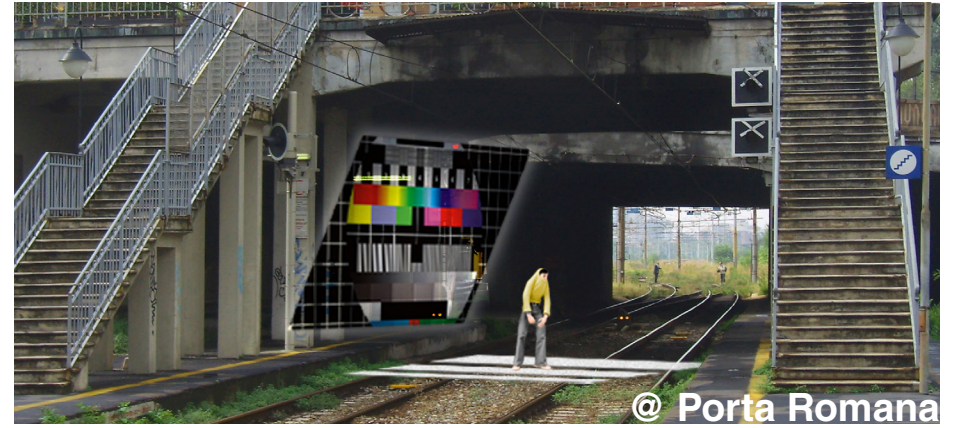
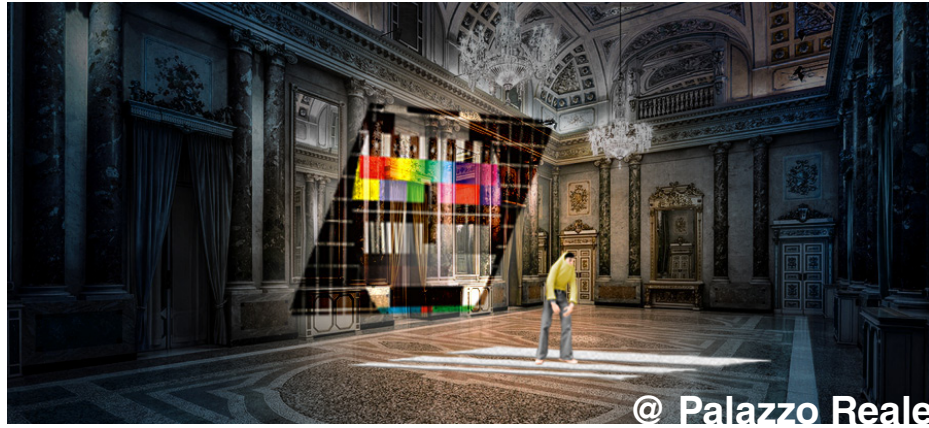
crumble



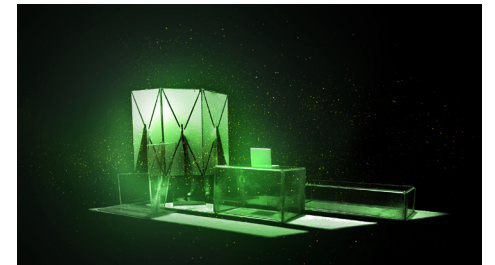
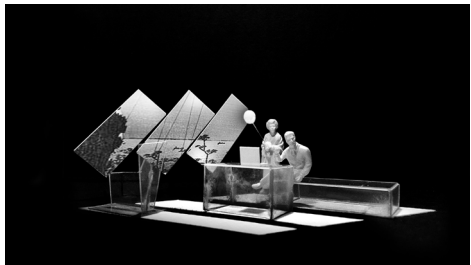
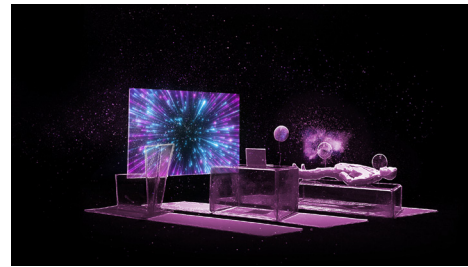
a broken room



SCENARIOS



STORYBOARD



THE STAGE



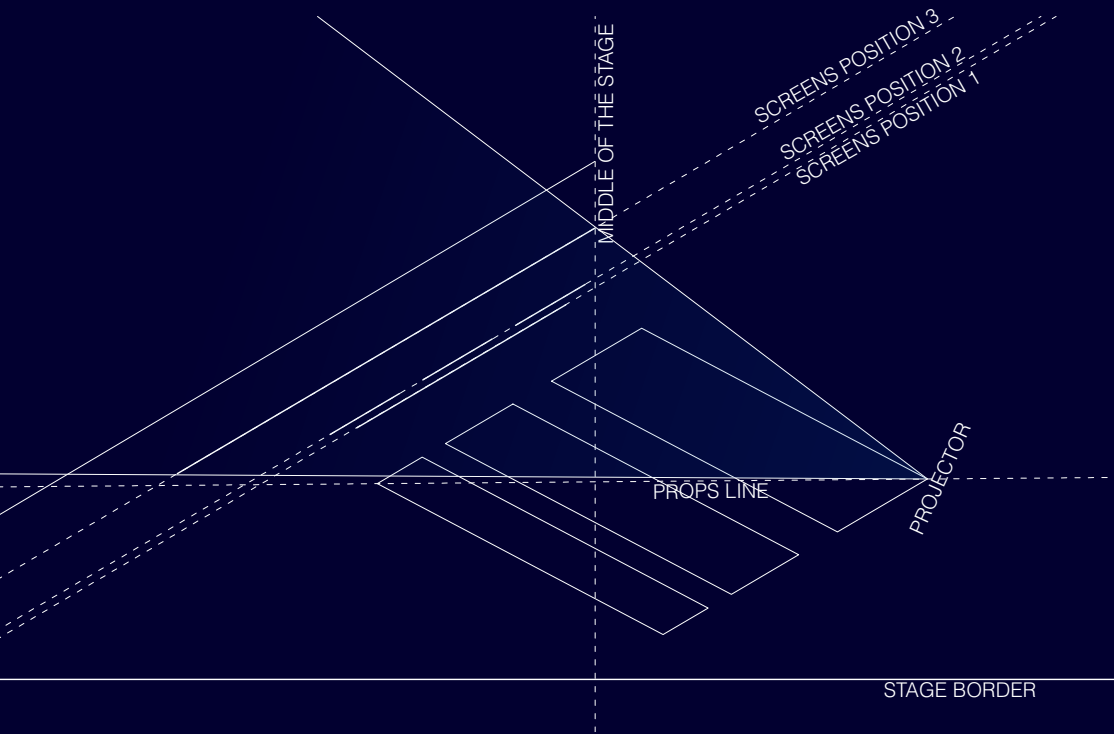
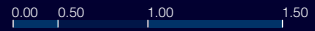
THE STAGE



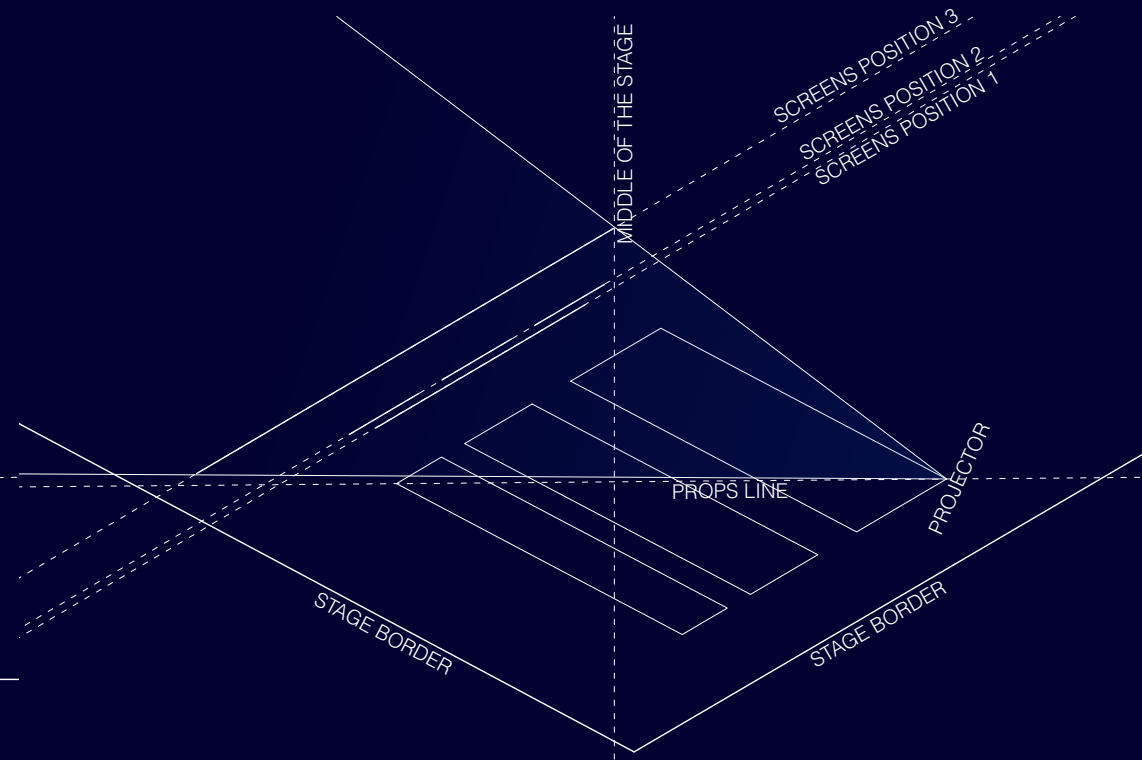
THE STAGE



IN-THEATRE PLAN



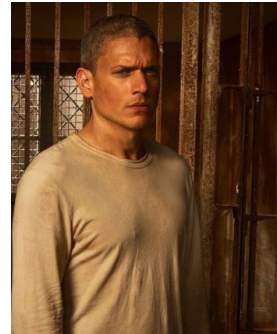
OFF-THEATRE PLAN



COSTUME DESIGN



The hikikomori (or the rabbit) is simple: he's camouflage, he's transforming himself around his bedroom. Maybe he's the bedroom himself.



COSTUME DESIGN



The fairygodmother is a provocateur, old fashioned woman. She's a lover and she usually dresses up fast before leaving their men. That's why she's wearing robes from their men. This elements says much about her self confidence.

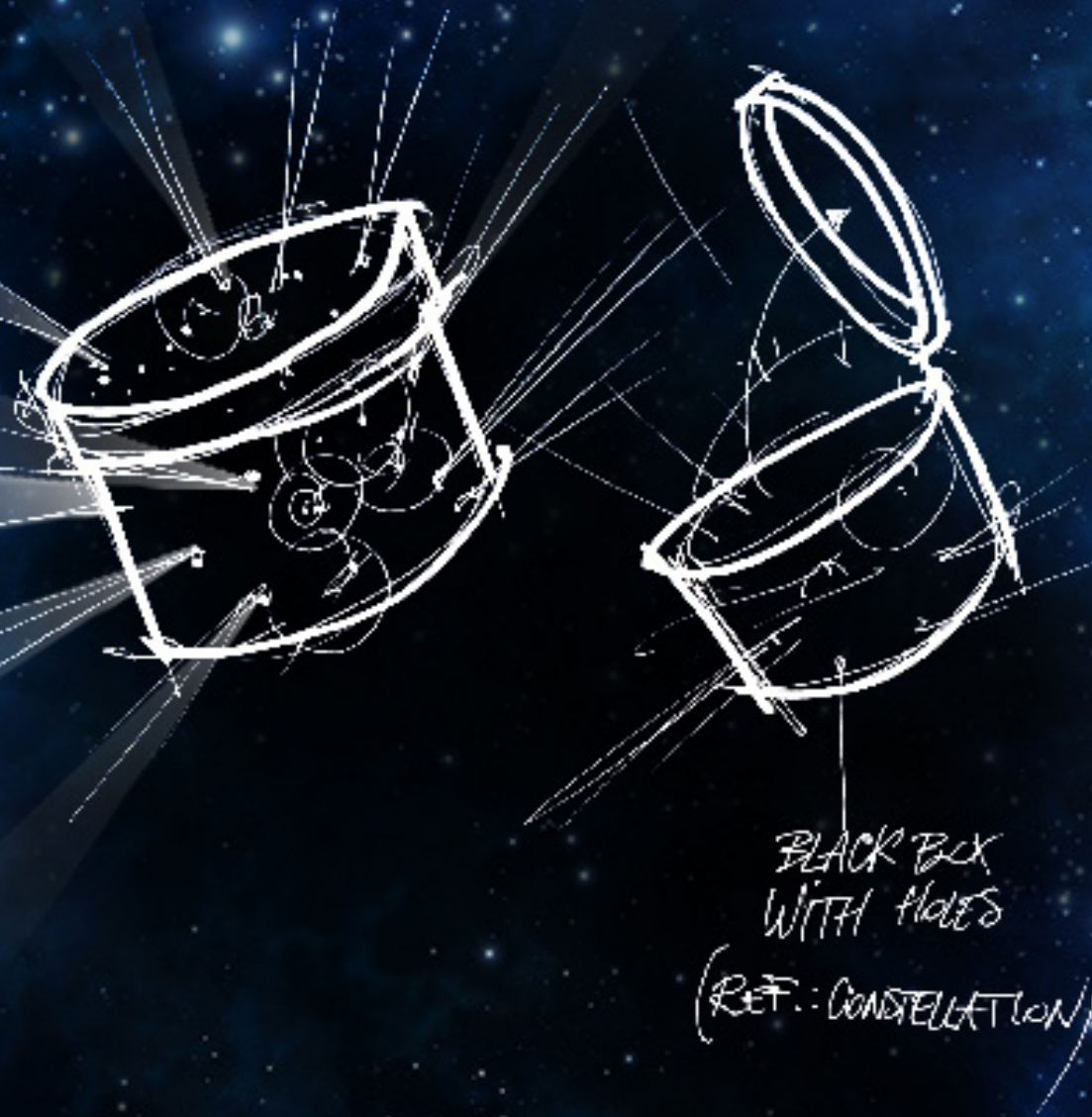


COSTUME DESIGN



Fairy godmother goes gym. Celebrity and provocative gym.

COSTUME DESIGN



The big bossy godmother represents the universe

